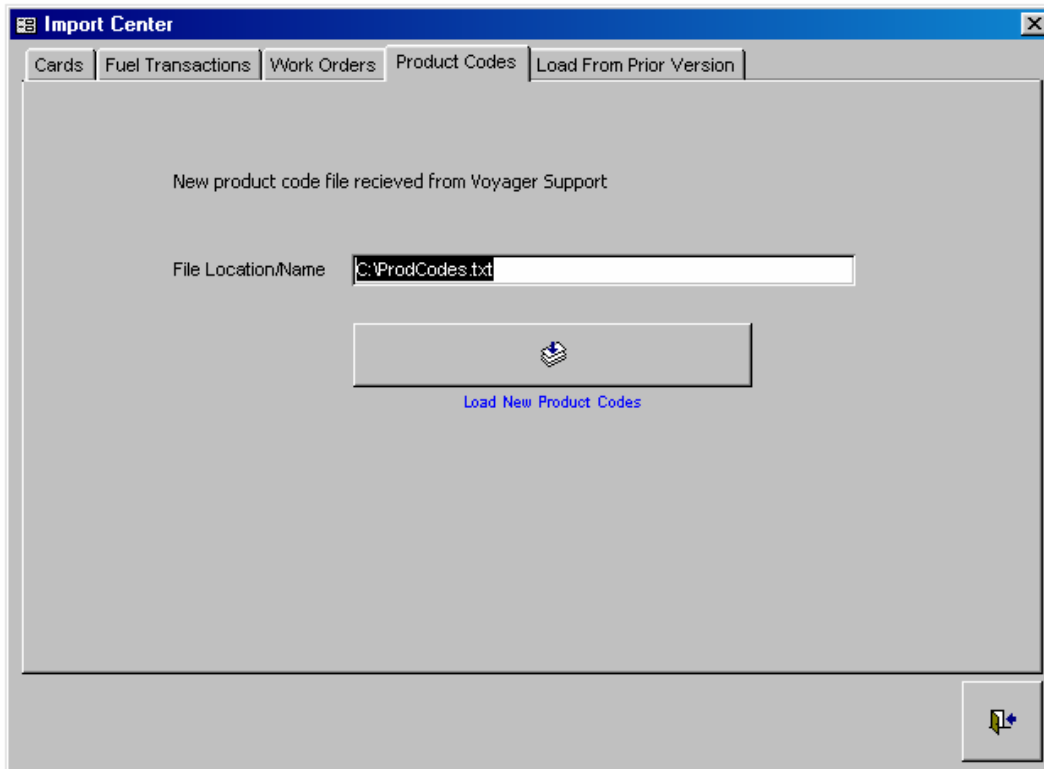


Telestream™ provides standard data interfaces that allow the automation of all data entry. Telestream™ can link-up with all major fueling and maintenance systems.

All data imports must be a comma delimited text file in the following format specifications. The optional elements can be null, however, their must be a placeholder comma.

Product Codes

Product codes are only intended to be updated if Voyager™ sends a new file to load into your Telestream™ system.



Element	Format	Requirement
Product Code	3 characters max, text or numeric	Required. Must be unique.
Product Description	255 characters max, text or numeric	OPT.
Product Abbreviation	255 characters max, text or numeric	OPT.

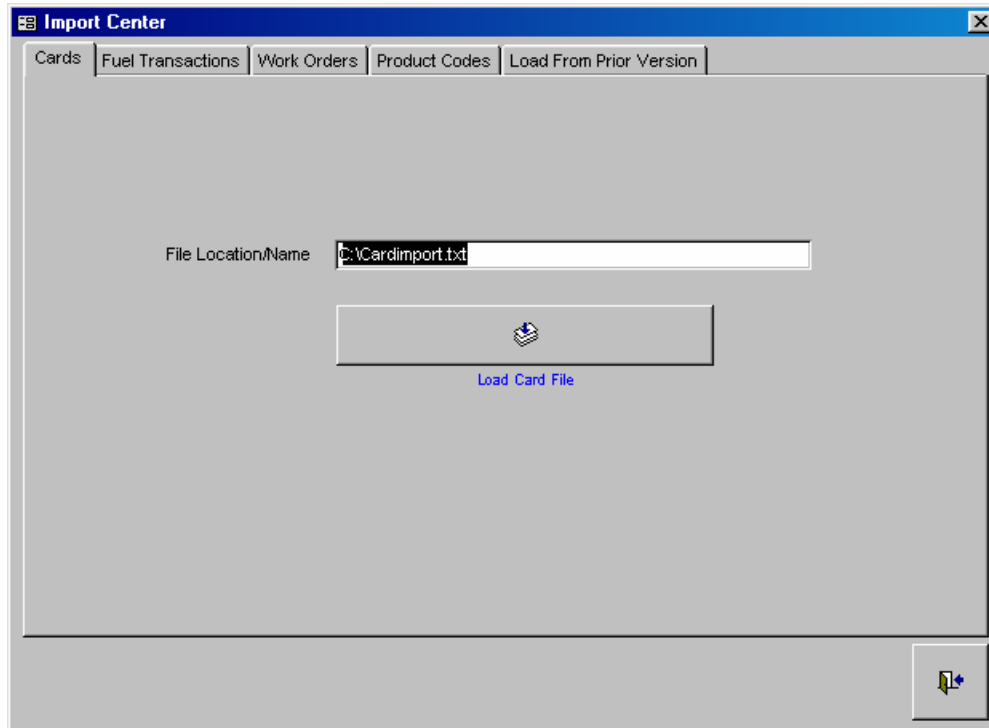
Sample file format:

```
" 01 " , " UNLEADED " , " UNLD "
" 25 " , " LABOR " , " LABR "
" 27 " , " WASH JOB " , " WASH "
" 33 " , " MISCELLANEOUS " , " MISC "
```



Cards/Equipment

Importing Cards and Equipment will speed the process of entering data from the screen and allow for more import options.



<u>Element</u>	<u>Format</u>	<u>Requirement</u>
Card Number	15 numeric characters	Required. Must pass check sum.
License	30 characters max, text or numeric	Required. Valid license number
License State	2 characters	OPT.
VIN	50 characters max, text or numeric	OPT.
VEHDESC	30 characters max, text or numeric	OPT.
L2	30 characters max, text or numeric	OPT.
L3	30 characters max, text or numeric	OPT.
L4	30 characters max, text or numeric	OPT.
L5	30 characters max, text or numeric	OPT.
L6	30 characters max, text or numeric	OPT.
L7	30 characters max, text or numeric	OPT.
UC1	30 characters max, text or numeric	OPT.
UC2	30 characters max, text or numeric	OPT.
UC3	30 characters max, text or numeric	OPT.
UC4	30 characters max, text or numeric	OPT.
UC5	30 characters max, text or numeric	OPT.
Odometer	Numeric	OPT.

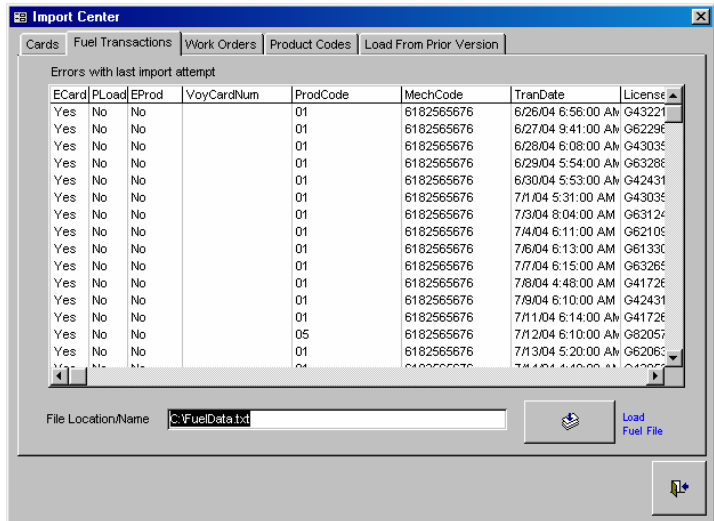
Sample file format:

```
"869901728714745", "G4274101", "NV", "1FTEE14Y3SHB48399", "1995 FORD E150",,,,,,,,,,5454
"869901728715042", "G4278738", "NV", "1FMEE1162VHB75239", "1997 FORD E150",,,,,,,,,,1244
"869901728068401", "G8206518", "IL",,,,,,,,,,,,,,12313
```



Fuel

The Voyager Card Number, License and License State must be included in fuel transactions where the card does not exist in Telestream™. Any new cards will be added on the fly through the fuel import process. If the card exists in Telestream™ users have the option of including one of the three identifiers: Card Number, VIN or License.



Element	Format	Requirement
Card Number	15 numeric characters	Required OPT. 1. Must pass check sum. Not required if valid VIN or License element exists.
VIN	50 characters max, text or numeric	Required OPT. 2. Not required if valid Card or License element exists.
License	30 characters max, text or numeric	Required OPT. 3. Not required if valid Card or VIN element exists.
License State	2 characters	OPT.
Merchant Terminal ID	20 characters max, text or numeric	OPT. If blank will use default merchant
Transaction Date	Date/Time, standard or military	OPT. If blank, import date/time.
Product Code	2 characters	Required. Must be a valid Voyager™ product code.
Issue Date	Date/Time, standard or military	OPT. If blank, import date/time.
Document Number	50 characters max, text or numeric	OPT. Invoice number or other defined by user
Authorization Number	50 characters max, text or numeric	OPT. Maybe required on large transactions.
Site Number	50 characters max, text or numeric	OPT.
Tank Number	50 characters max, text or numeric	OPT.
Pump Number	50 characters max, text or numeric	OPT.
Hose Number	50 characters max, text or numeric	OPT.
Unit Qty	Numeric	Required.
Unit Value	Numeric	Required.
Sub Total	Numeric	Required.
Transaction Total	Numeric	Required.
Tax Rate	Numeric	OPT.
Tax Amount	Numeric	OPT.
Odometer	Numeric	OPT. Will update the equipment odometer if with-in meter edit range.

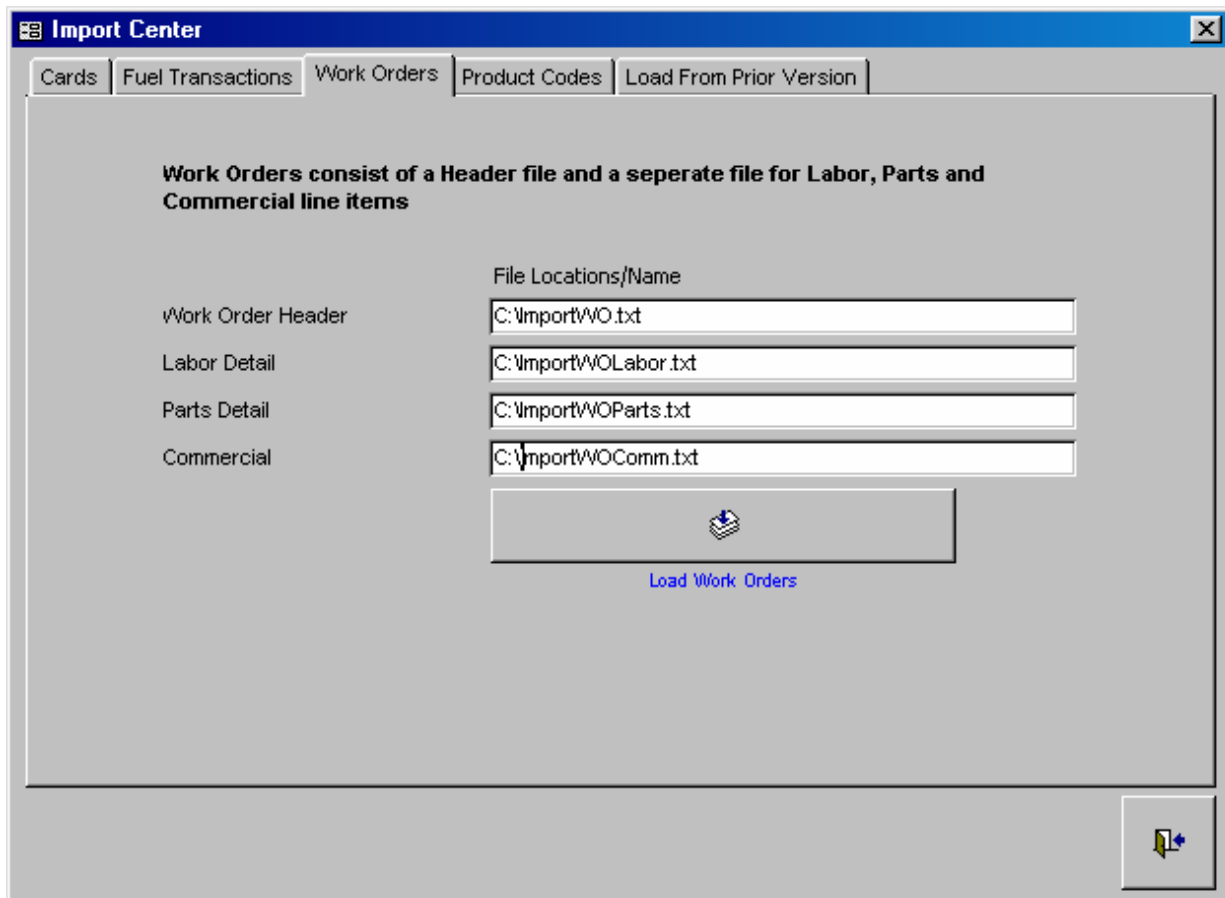


Sample fuel file format:

```
, , "G4303549", "CA", "6182565676", 7/1/2004 5:31:00, "01", 7/1/2004  
5:31:00, "GASBOY", , , , , 26.80, 1.99, 53.44, 53.44, 0.00, 0.00, 51294  
  
, , "G6312478", "CA", "6182565676", 7/3/2004 8:04:00, "01", 7/3/2004  
8:04:00, "GASBOY", , , , , 18.60, 1.99, 37.09, 37.09, 0.00, 0.00, 7283  
  
, , "G6210994", "CA", "6182565676", 7/4/2004 6:11:00, "01", 7/4/2004  
6:11:00, "GASBOY", , , , , 5.90, 1.99, 11.76, 11.76, 0.00, 0.00, 22854  
  
, , "G6133038", "CA", "6182565676", 7/6/2004 6:13:00, "01", 7/6/2004  
6:13:00, "GASBOY", , , , , 7.40, 1.99, 14.76, 14.76, 0.00, 0.00, 47874
```

Maintenance / Work Orders

Work Order or Maintenance data must be imported in separate sections. The four sections are the header, labor, parts and commercial issues. The header is the general section that each of the other sections must relate. The multiple labor, parts and commercial entries all relate to the one header record. Only the Header file is required. Each header record must have a unique close date or equipment identifier.



Element	Format	Requirement
Close Date	Date/Time	Required.
Card Number	15 numeric characters	Required OPT. 1. Must pass check sum. Not required if valid VIN or License element exists.
VIN	50 characters max, text or numeric	Required OPT. 2. Not required if valid Card or License element exists.
License	30 characters max, text or numeric	Required OPT. 3. Not required if valid Card or VIN element exists.
License State	2 characters	OPT.
Merchant Terminal ID	20 characters max, text or numeric	OPT. If blank will use default merchant
Document Number	50 characters max, text or numeric	OPT. Invoice number or other defined by user
Type	Numeric	OPT. 1=PM, 2=Repair. Value can be: 1 or 2 only. If blank, 2 filled.
Repair Reason	6 characters max, text or numeric	OPT.
Work Class	6 characters max, text or numeric	OPT.
Open Date	Date/Time, standard or military	OPT.
Finish Date	Date/Time, standard or military	OPT.
Drop-off (by User) Date	Date/Time, standard or military	OPT.
Estimated Completion Date	Date/Time, standard or military	OPT.
Pick-up (by User) Date	Date/Time, standard or military	OPT.
Odometer	Numeric	OPT. Will update the equipment odometer if with-in meter edit range.
Contact Name	50 characters max, text or numeric	OPT.
Contact Phone	50 characters max, text or numeric	OPT.
Shop Fee	Numeric	OPT.
PM Task	50 characters max, text or numeric	OPT.
Comments	255 characters max, text or numeric	OPT.

Sample file format:

```
8/27/2004 10:20:05,"869901728110500",,"G4310407","IL",,"",1,"13","2",8/27/2004
10:20:05,,,,,0,,,0.00,"0","Comment"
```

Commercial Entries

Generally considered work completed by an outside vendor.

Element	Format	Requirement
Close Date	Date/Time	Required.
Card Number	15 numeric characters	Required OPT. 1. Must pass check sum. Not required if valid VIN or License element exists.
VIN	50 characters max, text or numeric	Required OPT. 2. Not required if valid Card or License element exists.
License	30 characters max, text or numeric	Required OPT. 3. Not required if valid Card or VIN element exists.
License State	2 characters	OPT.





Issue Date	Date/Time, standard or military	OPT. If blank, Close date/time.
Vendor	50 characters max, text or numeric	OPT.
Invoice Number	50 characters max, text or numeric	OPT.
Labor Cost	Numeric	Required OPT. 1
Part Cost	Numeric	Required OPT. 2
Product Code	3 characters max, text or numeric	OPT. If not a valid Voyager product code the code will be set as miscellaneous (33)
Service Description	255 characters max, text or numeric	OPT.

Sample file format:

8/27/2004 10:20:05,"869901728110500",,"G4310407","IL",,,,,,,,,





Labor Entries

Generally considered internal labor issues.

Element	Format	Requirement
Close Date	Date/Time	Required.
Card Number	15 numeric characters	Required OPT. 1. Must pass check sum. Not required if valid VIN or License element exists.
VIN	50 characters max, text or numeric	Required OPT. 2. Not required if valid Card or License element exists.
License	30 characters max, text or numeric	Required OPT. 3. Not required if valid Card or VIN element exists.
License State	2 characters	OPT.

Issue Date	Date/Time, standard or military	OPT. If blank, Close date/time.
Labor Rate	Numeric	Required OPT. 1. If blank value calculated from Total Labor.
Total Labor	Numeric	Required OPT. 2. If blank value calculated from Labor Rate.
Number or hours	Numeric	OPT. If blank 1 is filled in.
Product Code	3 characters max, text or numeric	OPT. In not a valid Voyager product code the code will be set as default labor (25)
Employee Code/Name	50 characters max, text or numeric	OPT,

Sample file format:

8/27/2004 10:20:05,"869901728110500",,"G4310407","IL",,,,,,





Parts Entries

Generally considered internal parts issues.

Element	Format	Requirement
Close Date	Date/Time	Required.
Card Number	15 numeric characters	Required OPT. 1. Must pass check sum. Not required if valid VIN or License element exists.
VIN	50 characters max, text or numeric	Required OPT. 2. Not required if valid Card or License element exists.
License	30 characters max, text or numeric	Required OPT. 3. Not required if valid Card or VIN element exists.
License State	2 characters	OPT.

Issue Date	Date/Time, standard or military	OPT. If blank, Close date/time.
Part Description	50 characters max, text or numeric	OPT. If Description matches item in inventory. Part ID is filled in.
Unit Cost	Numeric	Required OPT. 1. If blank value calculated from Total Part.
Total Part	Numeric	Required OPT. 2. If blank value calculated from Unit Cost.
Issue Quantity	Double	OPT. If blank 1 is filled in.
Product Code	3 characters max, text or numeric	OPT. If not a valid Voyager product code the code will be set as miscellaneous (33)

Sample file format:

8/27/2004 10:20:05,"869901728110500",,"G4310407","IL",,,,,,

